

62

LOVELY HOMES



• The charm and fascination of a home depends much upon trees and shrubs and flowers. There are many homes of which passing strangers inquire, "Who lives in that lovely home?" There is unending satisfaction and delight—and great pride—in the possession of a home made lovely by its trees and flowers.

BEAUTIFUL GARDENS

• Perhaps nothing about a home can give more pleasure than a well-planned garden where we may sit alone or in company with our friends. It need not be formal or expensive, but may be planned with the simple beauty of spreading trees, a well-clipped lawn of grass with surrounding hedge and here and there the enticing beauty and color of nodding flowers.



PROFITABLE ORCHARDS

42 POUNDS PER TREE
EIGHTH YEAR

• The following year, the 8th year, trees of the Moore variety in the orchard shown at the left, produced an average of 42 lbs. per tree. Some trees yielded nearly 100 pounds each.

Photo at left was taken when trees in this fine GRAYWAY orchard were only 7 years old.

1958/59

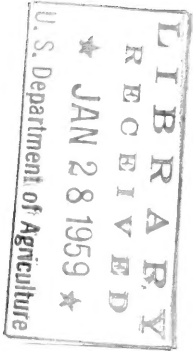
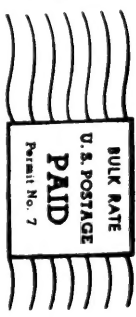
O. S. GRAY NURSERY
& LANDSCAPE

Box 513

ARLINGTON, TEXAS

Return Postage Guaranteed

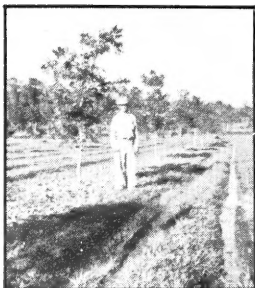
Form 3547 Requested



NOT OPEN SUNDAYS BUT VISITORS WELCOME

How to Plan A Modern Grayway Papershell Pecan Orchard

We have prepared a leaflet with diagrams and explanation of details of our Grayway Modern Orchard Plan. Send 25c in stamps or coin to defray printing and mailing costs.



Nearly 4,000 Papershell Pecan trees in this Grayway Planned and Planted orchard in San Saba County, Texas.

*"The Grayway Is the Best Way--
Go Grayway All the Way"*

**Why not plant a Grayway Papershell Pecan Orchard
on your farm or ranch?**



Mr. G. W. Bechtol of Tarrant County, Texas, inspects his 36,000 pound crop in his young 50-acre GRAYWAY-GROWN Papershell Pecan Orchard, only 13 years old. He sold \$10,000 worth of papershell pecans the 11th year. This fine orchard was planned by O. S. Gray and planted with GRAYWAY-GROWN nursery trees.

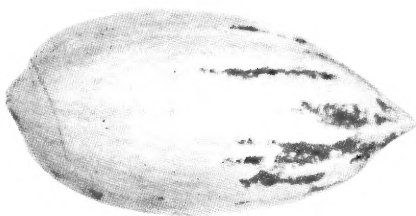
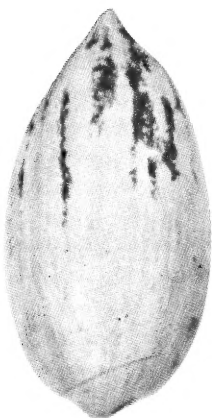
Yearly Production

8th year.....	4,000 lbs.
9th year.....	8,000 lbs.
10th year.....	8,143 lbs.
11th year.....	26,242 lbs.
12th year.....	26,306 lbs.
13th year.....	36,222 lbs.
14th year.....	32,000 lbs.
15th year.....	32,400 lbs.
16th year.....	60,000 lbs.
17th year.....	10,000 lbs.
18th year.....	30,500 lbs.

**Tree Tops
Yield
MONEY
CROPS**

"THE GRAYWAY IS THE BEST WAY"

NEW VARIETIES



7 The GRA-KING

(To Be Copyrighted)

Nearly as large as Mahan, but seems to fill out better and to be more cold-resistant. An early, heavy producer.

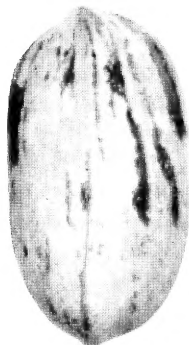
Original tree stands in Hugo, Oklahoma. Grown from a pecan nut obtained in Texas. Has been a good producer of very large nuts nearly as large as Mahan. Shell thicker than Mahan. Trees in our nursery in the severe freeze of 1950 were the only ones, along with Stuart, not injured. A very large and attractive nut.

✓ The BARTON

A New Papershell Pecan



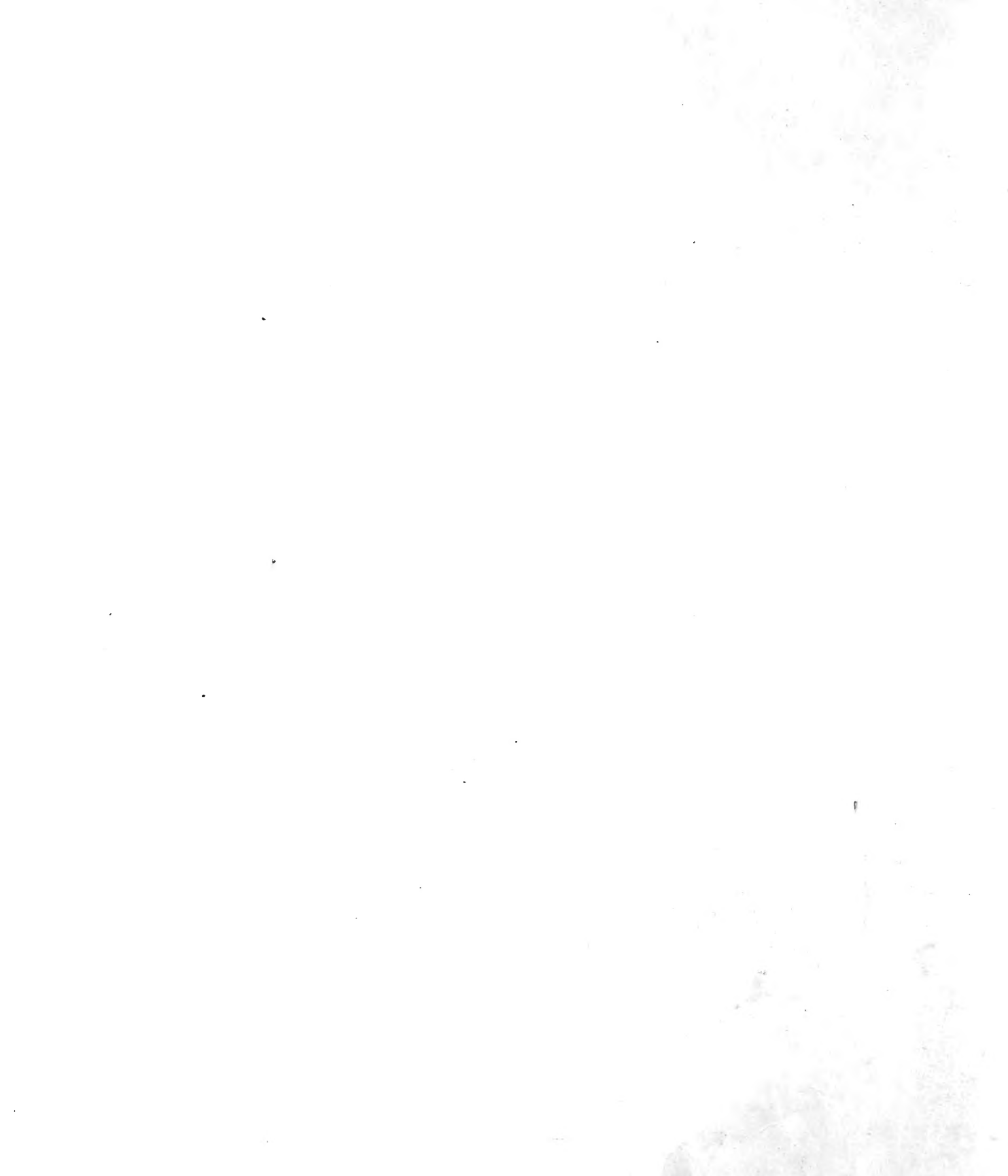
The BARTON, recently released by the U. S. Dept. of Agriculture, is a cross between the Success and the Moore varieties. The original cross was made by Mr. L. D. Romberg on the farm of Mr. John Barton in Bastrop County, Texas.



We are glad to add this excellent new pecan to our list of varieties, hoping that it will have a permanent place by combining the disease-resistance and prolificness of the Moore with the size and excellent kernel qualities of the Success, its two parents.

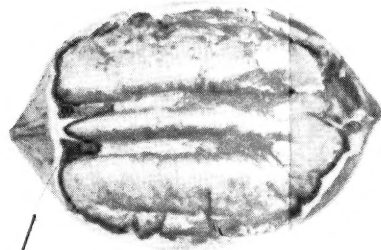
Barton is excellent for shelling in the home. Its thin shell cracks easily, and kernel separates readily. The tree is proving to be a very heavy producer, and the nuts ripen rather early. The nut is attractive in both size and markings.

We also grow a limited supply of:—SCHLEY, a well-known variety with a very thin shell; DELMAS, one of the most beautiful of all yard trees, a good producer of large pecans; JENNINGS, a highly disease-resistant pecan especially for Southern Louisiana, bearing medium size nuts.



Eastern Varieties

Western Varieties



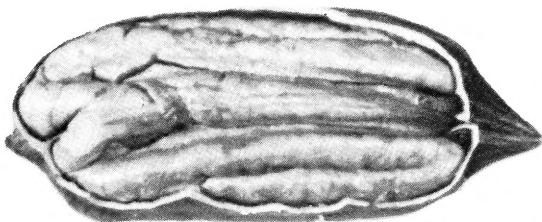
SUCCESS—Most popular eastern variety in Texas. Large—40 per pound; medium shell; 52% kernel. Fairly early producer; ripens uniformly in mid-season. Buds late in spring.

BURKETT—Large—40 per lb. Thin shell; 50% plump, rich kernel. Mid-season ripener; heavy, producer. Popular western variety.



DESIRABLE—One of the largest. Excellent cracker; early bearing; promises to be one of heaviest producers; thinner shell than success.

WESTERN SCHLEY—Early and heavy producer; about 55 per pound; 60% kernel. Moderately early ripener; vigorous grower; good yard tree.



GIANT MAHAN—Perhaps the largest of all papershell pecan varieties. Sometimes 3 inches long; thin shell, vigorous grower and a heavy producer. Usually does not fill out very well, but nuts look like bananas hanging on tree. A good grower that makes an excellent shade tree for the home.

PRICES OF PECAN TREES PLANTED BY US

Size No.	Price of Tree	We Plant and Guarantee	
		Planting	Total
1059	\$10.50	\$ 6.00	\$16.50
1699	16.95	8.00	24.95
2199	21.95	8.00	29.95
2899	28.95	10.00	38.95
4009	40.00	10.00	50.00

GUARANTEE: We will replace and replant any dead tree at the end of the first summer without charge for the tree provided the customer pays us for the planting at our regular printed charge. (See NOTE). On large, B & B trees, the planting charge will be 20% of the original cost.

(See NOTE)

Famous GRAYWAY PAPERSHELL PECAN TREES

Price List No. 59

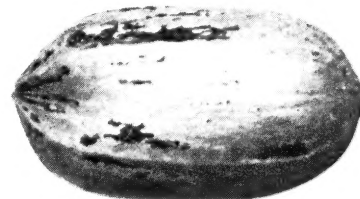
DIRECT from GROWER to YOU!

• We grow our own papershell pecan trees right in our own fields (See photographs on page 15) and there's no middleman when you buy papershell pecan trees at GRAYWAY.

• Our famous GRAYWAY brand papershell pecan trees have been planted by the thousands for nearly twenty years over the South and Southwest, and some of the finest producing orchards in this section were planted with GRAYWAY trees.

Easy to Live! — Early to Bear!

• GRAYWAY Papershell Pecan trees are chock-full of stored-up energy. Customers find them easy to live and grow, and our files are full of letters from folks who have expressed amazement at the way these GRAYWAY trees just seem to push their roots down into the soil and start growing.



STUART—Old variety, safely used over wider territory than probably any other. Large, medium shell—48-50% kernel. Early ripener.

Papershell Pecan Tree Price List

FALL 1958 — SPRING 1959

TREES PLANTED BY CUSTOMERS

GUARANTEE: We will replace, f.o.b. the nursery, for one-half the purchase price, any dead tree if notified at the end of the first summer. Dead trees should be returned to the nursery for examination. Maybe we can help you by determining the cause of failure. (See NOTE)

IMPORTANT

1. Add 10c per tree if Scientific Root treatment is desired.
2. Add 25c per tree for GraKing, Barton and Comanche.
3. Prices are F.O.B. Arlington.
4. Shipment by express or motor freight.
5. The length of root is not included in height of tree.
6. Trees will be pruned, ready for plant.

Size	Approx. Height Ft.	1-9 Trees Each	10 Trees Up
No. 249	2 to 3	\$2.40	\$2.25
No. 299	3 to 4	2.95	2.80
No. 399	4 to 5	3.95	3.70
No. 499	5 to 6	4.95	4.70
No. 659	6 to 7	6.50	6.25
No. 799	7 to 8	7.95	7.70

BEARING SIZES: Most of the following sizes have borne one or more crops of Papershell Pecans in the nursery fields. The larger sizes have borne five or six crops.

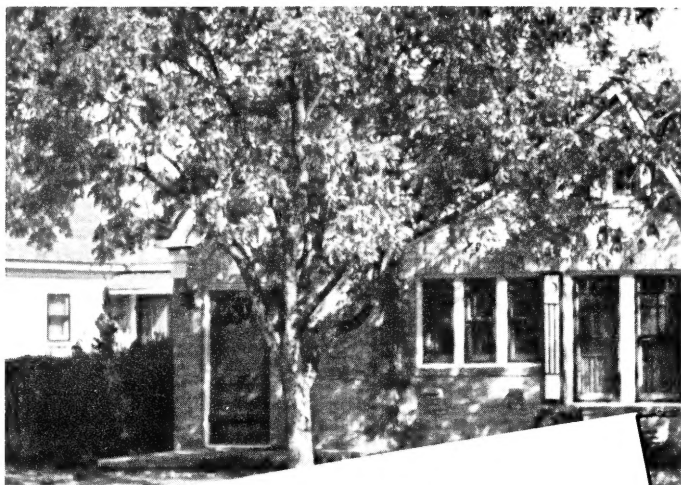
Size	Diameter (Inches)	Approx. Height Ft.	Price Each
No. 1059	1 3/16 to 1 7/16	8 to 9	\$10.50
No. 1699	1 7/16 to 1 3/4	9 to 12	16.95
No. 2199	1 3/4 to 2	11 to 14	21.95
No. 2899	2 to 2 1/4	12 to 15	28.95
No. 4009	2 1/4 to 2 1/2	13 to 16	40.00

NOTE: If these bearing sizes are to be packed for shipment, add 10% for packing.

NOTE: Our guarantees cover a one-time replacement of the original tree only, and apply only to trees purchased at our standard 1 to 9 tree prices. Trees must be planted and cared for according to our printed instructions, and we are not responsible for losses due to drought, flood, windstorm, termites, hail, accident, fire, borers, or other circumstances over which we have no control. We reserve the right to withdraw or change our guarantees at any time.

"THE GRAYWAY IS THE BEST WAY"

"GO GRAYWAY ALL THE WAY"



Bearing Sizes GRAYWAY-GROWN PAPERSHELL PECAN TREES

MOVED DIRECT FROM OUR NURSERY TO YOUR HOME

What we call our bearing size papershell trees are those that have borne one or more crops of nuts in our nursery; mostly trees with trunks 1½ inches and up in diameter. Those with trunks 3 inches and up should usually be moved with a ball of earth around the roots—called "B & B" for "balled & burlapped." Weighing from 500 to 1,500 lbs., they require winches and trucks for hauling, and sell for \$99.50 and up, planted and guaranteed.

Because of the earth around the roots, they are pruned very little; so they go right on producing with little delay, giving quick production and quick shade, saving several years in time. Priced \$99.50, \$135.00 and \$175.00 delivered, planted and guaranteed in Dallas or Fort Worth.

*Add Shade
and Beauty to Your Home*

NEW! We have a special size 2¼" - 2½" trunk diameter about 13 to 16' high, transplanted and guaranteed in the Dallas - Ft. Worth area for only \$60.00 each B&B. These trees have borne at least 2 or 3 crops in our nursery.

SHADE TREES that PAY DIVIDENDS

The Papershell Pecan is one of the most beautiful and longest lived of all trees, and it bears one of our finest nuts.

In the value of its delicious nut crop, it will repay its cost not once, but over and over again, regardless of whether it's original cost was \$1 or \$100.



"THE GRAYWAY IS THE BEST WAY"

REDS

Hybrid Tea

		3 for
Bravo.....	\$2.25.....	\$6.00
Charlotte Armstrong.....	2.25.....	6.00
Happiness.....	2.00.....	5.25
Mirandy.....	2.25.....	6.00
Nocturne.....	2.25.....	6.00
**Crimson Glory.....	1.19.....	
**Etoile de Holland.....	1.19.....	
**Red Radiance.....	1.19.....	

Floribunda

**Eutin.....	1.19.....	
**Rose Elf.....	1.19.....	

Grandiflora

Starfire.....	3.50.....	9.20
---------------	-----------	------

Climbers

Charlotte Armstrong.....	2.50.....	6.60
Crimson Glory.....	2.50.....	6.60
**Etoile de Holland.....	1.25.....	
**Blaze Imp. Ever-Blooming Pauls Scarlet	1.25.....	
**Red Radiance.....	1.25.....	

PINKS

Hybrid Tea

Helen Traubel.....	2.75.....	7.20
Pink Peace.....	3.00.....	7.95
Tiffany.....	2.50.....	6.60
**Editor McFarland.....	1.19.....	
**Pink Radiance.....	1.19.....	
**The Doctor.....	1.19.....	

Floribunda

China Doll.....	2.25.....	6.00
Fashion.....	2.00.....	5.25
Pink Rosette.....	1.50.....	
**Cecile Brunner.....	1.19.....	

Grandiflora

Queen Elizabeth.....	2.50.....	6.60
Montezuma.....	2.75.....	7.20

Climbers

Pinkie.....	2.00.....	5.25
Pink (New) Dawn.....	1.25.....	

YELLOWS

Hybrid Tea

Golden Scepter.....	2.00.....	5.25
Peace.....	2.50.....	6.60
**Eclipse.....	1.19.....	

Floribunda

Spartan.....	2.75.....	7.20
--------------	-----------	------

Climbers

Peace.....	2.00.....	5.25
Mrs. P. S. DuPont.....	1.25.....	

LIBRARY
RECEIVED
★ JAN 28 1959 ★
U. S. Department of Agriculture

*Non Patent

WHITES

Hybrid Tea

**K.A.V.....\$ 1.10.....\$

Floribunda

Ivory Fashion..... 2.75..... 7.20

White Bouquet..... 2.50..... 6.60

MULTICOLOR

Hybrid Tea

Forty Niner..... 2.25..... 6.00

Kordes Perfecta..... 3.50..... 9.20

**President Hoover..... 1.10.....

Floribunda

Circus..... 2.10..... 6.40

Climbers

**Talisman..... 1.10.....

Red- Crimsen Rosette (Floribunda).....1.50.....

O. S. GRAY NURSERY

Fruit Tree Prices

January 13, 1959

APPLES

✓ Red Delicious	7 to 8 ft.	\$2.75
✓ Dbl. Red Delicious	5 to 6 ft.	\$2.95
✓ " " "	6 to 7 ft.	\$3.45
✓ Yellow Delicious	5 to 6 ft.	\$2.45
	6 to 7 ft.	\$2.95

APRICOTS

✓ Moorepark	4 to 5 ft.	\$1.95
✓ " "	5 to 6 ft.	\$2.45
✓ Cluster	4 to 5 ft.	\$1.95
	5 to 6 ft.	\$2.45

FIGS

✓ Texas Everbearing	18/24 inches	.75
✓ " "	2 to 3 ft.	.95

GRAPES

✓ Fredonia	Vine	.50
✓ Concord	Vine	.50

PEACHES

(Varieties Available on Nematode Resistant Roots)

✓ Cardinal	✓ Dixigem	✓ Halehaven	✓ Redskin	
✓ Redcap	✓ Ranger	✓ July Elberta	✓ Elberta	
✓ Dixired	✓ Red Globe	✓ Sull. Early Elberta	✓ Perkins	
	✓ Frank	✓ Indian		
	3 to 4 ft.	\$1.45	5 to 6 ft.	\$1.95
	4 to 5 ft.	1.75	5 to 6 ft. Ex. Hvy.	\$2.95
			6 ft. Heavy	\$3.95

Triple-Tree Orchard Prices

Three, 3 to 4 ft. trees	\$4.00
Three, 4 to 5 ft. trees	\$5.00
Three, 6 ft. trees (Extra Heavy)	\$8.50

PEARS

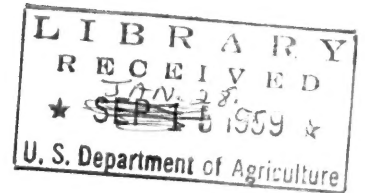
✓ Bartlett	4 to 5 ft.	\$3.45
✓ " "	5 to 6 ft.	\$3.45
✓ " "	6 to 7 ft.	\$3.45
✓ Keiffer	7 to 8 ft.	\$3.45
✓ Orient	7 to 8 ft.	\$3.45

PERSIMMONS

✓ Fane Nashi	3 to 4 ft.	\$2.95
✓ " "	4 to 5 ft.	\$3.50
✓ Eureka	3 to 4 ft.	\$2.95
✓ " "	4 to 5 ft.	\$3.50

PLUMS

✓ Alfred Plum	7 to 8 ft.	\$2.45
✓ Bruce Plum	4 to 5 ft.	\$1.95
✓ " "	5 to 6 ft.	\$2.45
✓ " "	6 to 7 ft.	\$2.95
✓ Gold Plum	7 to 8 ft.	\$3.25
✓ Methly Plum	7 to 8 ft.	\$2.95
✓ " "	8 to 9 ft.	\$3.75
✓ Santa Rosa	6 to 7 ft.	\$1.95
✓ " "	7 to 8 ft.	\$2.45
✓ " "	8 to 9 ft.	\$2.95
○ Yellow Plum	5 to 6 ft.	\$1.95



Fruit Tree Prices cont'd.....

WALNUT, BLACK

5 to 6 ft.....\$4.95

BERRY PRICES.....

Strawberries

➤ Streamliner
10 for \$1.95

20 for \$2.95

30 for \$3.70

➤ Gem
10 for \$1.35

20 for \$2.30

30 for \$3.00

➤ Blakemore
10 for 98¢

20 for \$1.79

30 for \$2.45

Dewberry

➤ Austin (see Boysenberries)

Blackberry

○ Humble (see Boysenberries)

➤ Boysenberries

5 for 75¢
10 for \$1.35

20 for \$2.50
50 for \$5.50

o o o o o o o o

➤ Montmorency Cherry

4 to 5 ft.....\$2.45

➤ Nectarine

5 to 6 ft.....\$2.45

o o o o o o o o

➤ MAJIE FRUIT TREES

Dbl. Red Delicious Apples	3 to 4 ft...	\$3.45
Yellow Delicious Apples	3 to 4 ft...	\$3.45
Elberta Peach	4 to 5 ft...	\$2.95
Bruce Plum	4 to 5 ft...	\$2.95

Gray's Tripl-Tree Orchard

A Family Peach Orchard

Planted in Less Than a Square Yard



If you have room for one tree, you can plant a Gray's Tripl-Tree Orchard. Plant three varieties ripening at different times, about 18 inches apart, in the same hole. Then sit back and watch 'em grow. Provide fresh fruit during two or three months. Produces fruit the third summer—maybe a little the second. Takes up no more room than a single tree. Can produce 100 to 200 lbs. delicious peaches in one season. Order two Tripl-Tree Orchards (six trees) and have peaches ripening from early June to August.

TRIPL-TREE ORCHARD PRICES (Not Prepaid)

Three 3 to 4 ft. trees.....	\$ 4.00
Three 4 to 5 ft. trees.....	5.00
Three 6 ft. trees (Extra heavy).....	8.50

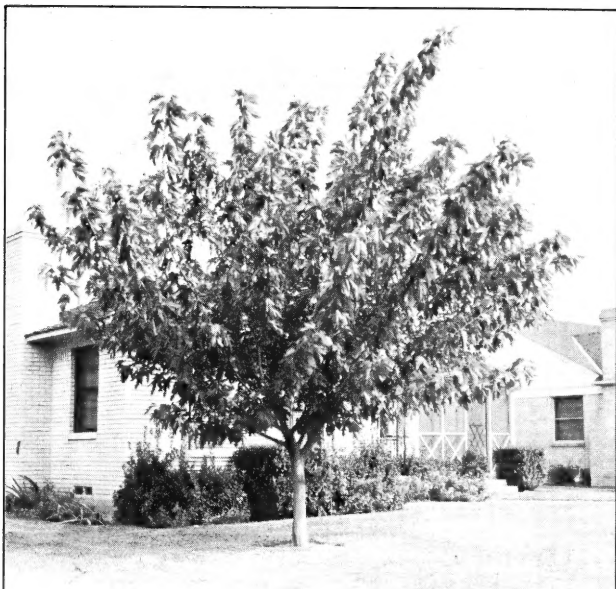
PEACH VARIETIES—(Listed in approximate order of ripening. The number following the variety name denotes the number of weeks the variety ripens before Elberta.)

- **CARDINAL.** (6½) Earliest yellow-fleshed cling. Plenty of red color.
- **REDCAP.** (6) Attractive red blush. Good flavor. Yellow flesh cling.
- **DIXIRED.** (6) Cling. Highly colored, attractive, yellow flesh.
- **DIXIGEM.** (5) Attractive, early-ripening yellow-flesh freestone.
- **RANGER.** (4) Yellow-fleshed freestone. Superior to Golden Jubilee.
- **RED GLOBE.** (2) New yellow flesh freestone of good quality.
- **HALEHAVEN.** (2) Large, beautifully colored, prolific. Popular.
- **JULY ELBERTA.** (2) Similar to Halehaven, but used farther south.
- **SULLIVAN EARLY ELBERTA.** (1) Similar to Elberta in every way.
- **REDSKIN.** (0) Freestone ripening with and superior to the Elberta.
- **ELBERTA.** Old reliable well-known, yellow-fleshed freestone.
- **PERKINS.** Yellow flesh freestone that ripens about one week after Elberta. Excellent quality. One of the finest in its season.
- **FRANK.** A yellow-fleshed cling. Ripens 2 weeks after Elberta.
- **INDIAN.** Red fleshed, highly colored clingstone.

PEACH TREE PRICES (Not Prepaid)

3-4 ft. Branched 2 years.....	\$1.45
4-5 ft. Branched 2 years.....	1.75
5-6 ft. Branched 2 years.....	1.95
5-6 ft. Extra Heavy.....	2.95
6 ft. Heavy.....	3.95

"GO GRAYWAY ALL THE WAY"



Gray's NON-FRUITING MULBERRY

6-Inch Diameter—Only 2 Yrs. Old
At Home of J. J. McNerny, Dallas, Texas

One of the most rapid growing trees we know of. Have seen it grow 15 feet in one year. Smooth, attractive trunk; large, dark green leaves. Absolutely non-fruiting. Promises to fill a need for a really good, rapid growing shade tree. Young trees sometimes tender in the fall, but mature trees seem perfectly hardy, having taken the 8 degree temperature a few years back. Our supply is very limited.

PRICE LIST NO. 59

Prices FOB Arlington. Shipped by Motor Freight or Express.
(Too large for Parcel Post).

Diameter	Height	Price—Each	
3/4" - 1"	6 to 8'	\$ 3.95	Because of large branches and large root system, we must have a minimum shipment of 3 trees. Get your neighbor to order with you. *These sizes too large to ship.
1" - 1 1/8"	7 to 9'	4.95	
1 1/8" - 1 3/8"	7 to 9'	5.95	
1 3/8" - 1 3/4"	9 to 11'	8.50	
1 3/4" - 2"	9 to 11'	10.50	
2" - 2 1/2"	9 to 11'	12.50	
2 1/2" - 3"	10 to 12'	*15.00	
3"	10 to 12'	*17.50	

LARGE SIZE

(Delivered & Planted within 50 miles of Arlington. Cannot be shipped).

RED OAK	WILLOW
LIVE OAK	SYCAMORE
MAGNOLIA	HOLLY
MIMOSA	BUR OAK

Many of these are up to 25 ft. high. You are invited to see them.



RED OAK

Over 1,000 Red Oak Trees growing in our Nursery